

Connecting the I.T. to a Network

To adjust network settings, double click on the **My Handheld PC / Control Panel / Network**.

The Network Configuration screen will appear. The adapter you choose will depend on the type of network you have. Consult your network manager.

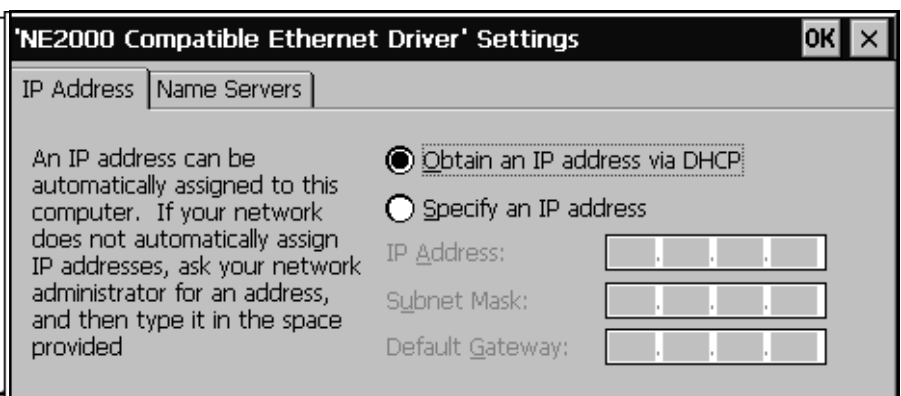
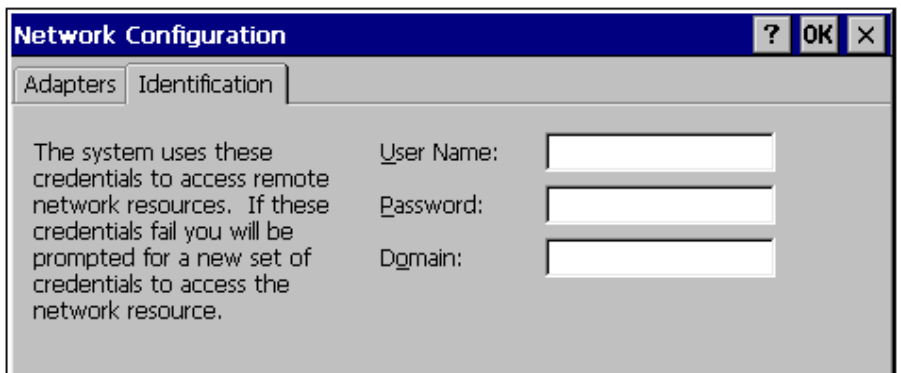
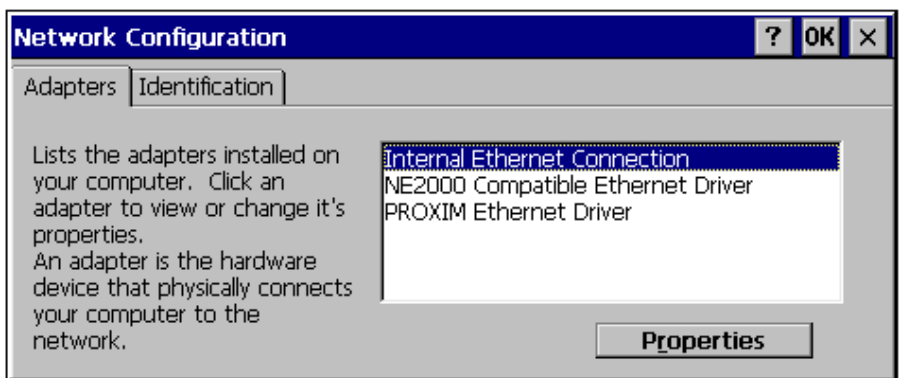
The Identification tab requires basic information which you already have.

Go back to the Adapter tab and click on the **Properties** button.

If you are running DHCP services on your network ...

be sure that **Obtain an IP address via DHCP** is selected, then click on **OK**. A window warning you that the changes will take effect the next time you start the computer will display. Click on **OK** and then click on **OK** again at the Network Configuration window.

To have the DreamWriter® start up with the new adapter, hold down the power switch for 5 seconds. When the screen turns off, release the button and the computer will start up again ("Warm Boot").

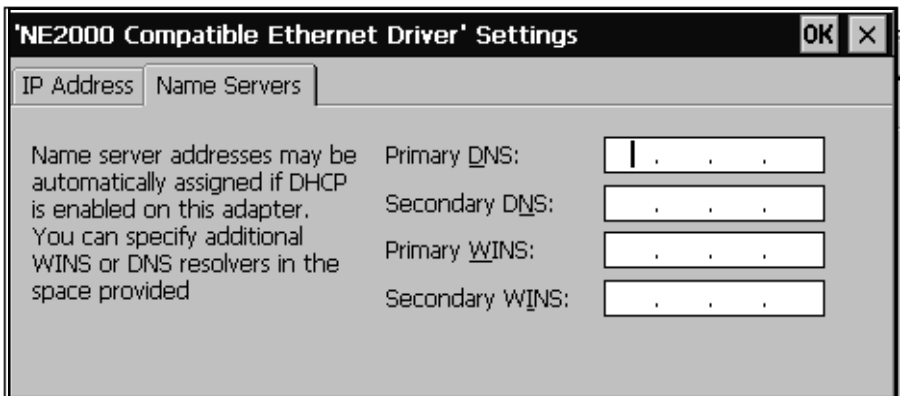
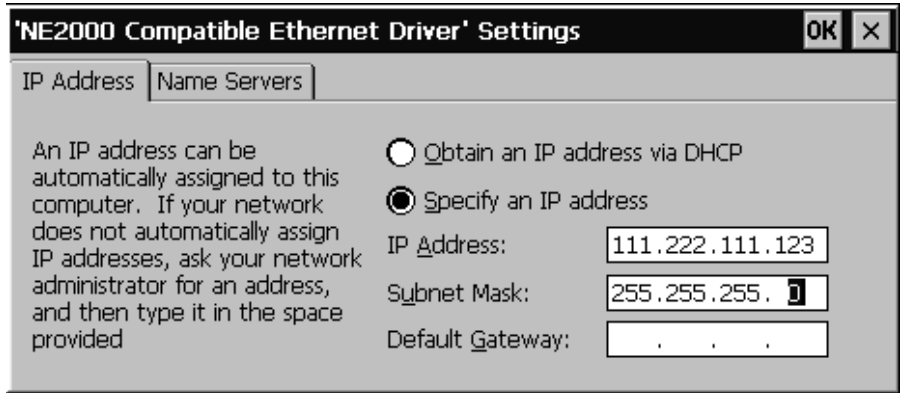


If you are not using DHCP services on your network ...

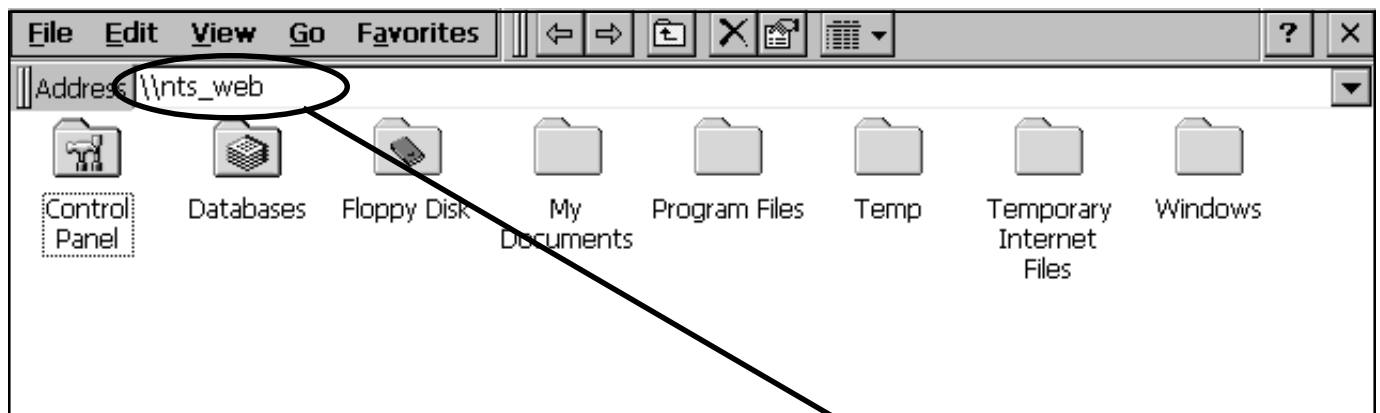
Select Specify an IP address and enter the address given to you by your network administrator. (The subnet mask is usually 255.255.255.0)

Depending on your network you may also have to specify the Primary DNS. Your network administrator will know whether or not this is necessary.

When you have entered the necessary information, click on **OK**. A window warning you that the changes will take effect the next time you start the computer will display. Click on **OK** and then click on **OK** again at the Network Configuration window.



To have the DreamWriter® start up with the new adapter, hold down the power switch for 5 seconds. When the screen turns off, release the button and the computer will start up again ("Warm Boot").



To Log on to the Network...

On the desktop, double click on the **My Handheld PC** icon.

The window opens. Put the name of the server preceded by two back slashes (\\) on the address line. This information will be remembered. The next time you log on, click on the down arrow at the far right of the address line to display the addresses and click on the desired address.