

Dialing Out with the I.T.

Setting Dialup Properties

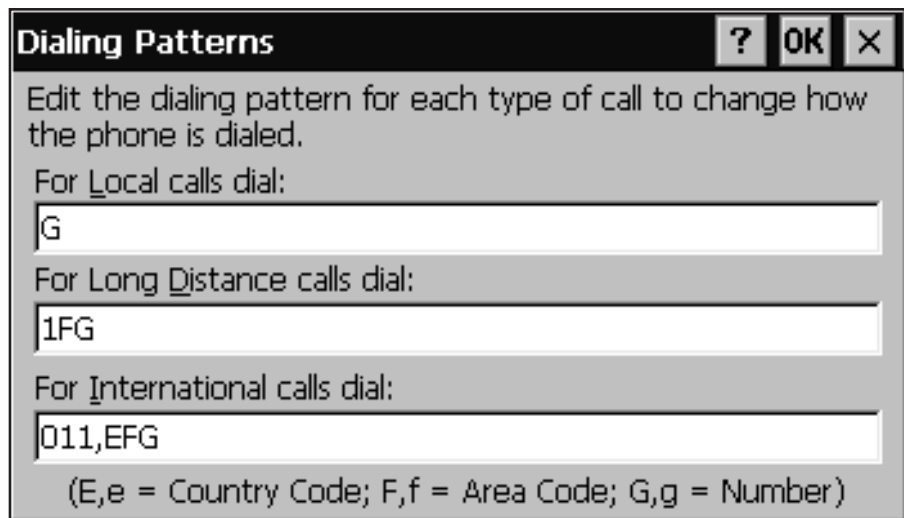
On the desktop, double click on **My Handheld PC / Control Panel / Dialing**.

Set the local area code and the tone or pulse options. The "When dialing from:" categories are only for organizational purposes.



Click on **Dialing Patterns...**

Set the pattern for Local Calls. It will be a G or g to dial only the number. If you are dialing from a phone system where you dial 9 to get out, the pattern would be 9,G. It is not necessary to set all the patterns if you are not making long distance calls to service providers.

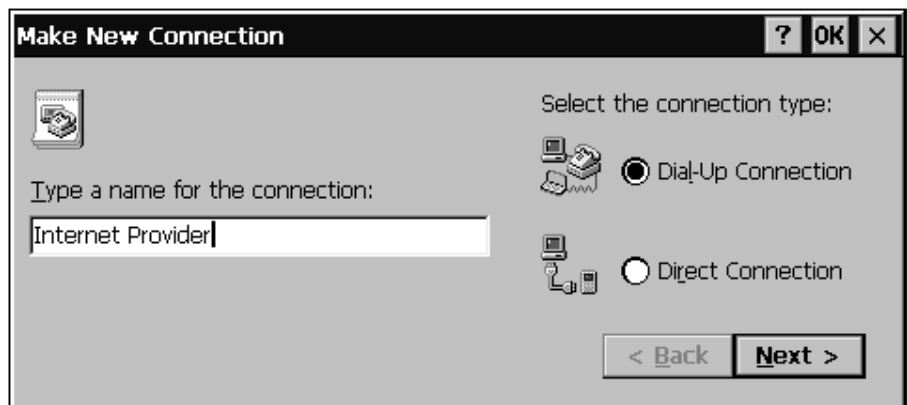


Creating a connection

Click on **Start / Programs / Communication / Remote Networking**.

Double click on the **Make New Connection** icon.

Set the connection type to Dial-Up Connection and give it an identifying name.



Creating a connection contd.

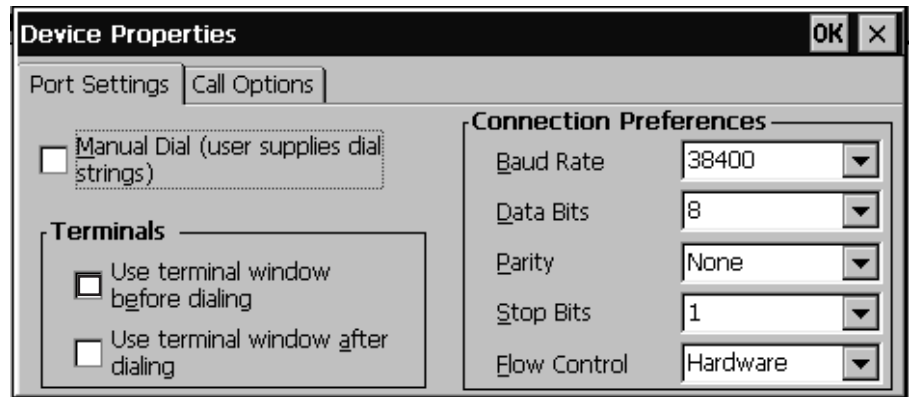
Click on the **Next** button to bring up the Make New Dial-Up Connection window.

Ensure the modem is set to **Internal Modem on COM3**.

Click on the **Configure** button to bring up the Device Properties window.

Set the **Baud Rate** to **38400**.

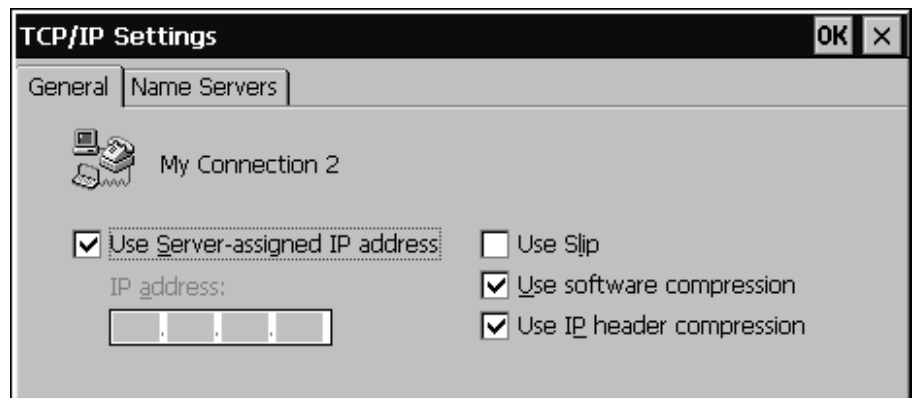
Click on the Call Options tab and check the settings. Ensure that the “Cancel the call if not connected within” option is set to 60 seconds or more.



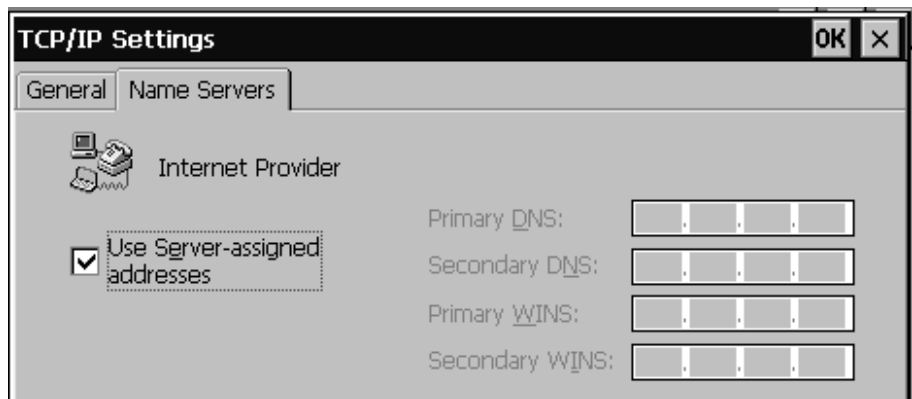
Click on **OK**.

Click on the **TCP/IP Settings...** button.

On the **General** tab ensure that **Use Server-assigned IP address** is checked. **Use software compression** and **Use IP_header compression** should also be checked.



Click on the **Name Servers** tab. Some service providers will require you to specify the Primary DNS address but most will not. If an address is required, click on the check mark opposite **Use Server-assigned addresses**. Otherwise, ensure that **Use Server-assigned address** is checked.



Click on **OK** then click on **Next**.

Enter the phone number of your service provider. If you will not be dialing long distance to reach your service provider, click on **Force Local** to ensure that long distance calls will not be made.

Click on **Finish** to complete the process.

Dial-Up Connection

My Connection 2

Country: 1 Area: 250 Telephone number: 555-5555

Force long distance Force local

< Back Finish

Making the call

Click on **Start / Programs / Communication / Remote Networking**.

Click on the icon bearing the name you gave when you set it up (e.g. Connection 2).

The Dial-Up Connection screen appears. Enter the information and click on save password (unless you want to enter it each time).

The **Domain** information is given to you by your service provider.

Click on **Connect** to begin dialing.

Dial-Up Connection

Internet Provider

User Name: Password: Domain: Save password

Phone: T555-5555 Dial from: Home

Dial Properties... Connect Cancel

All the settings you have made will be retained by the computer unless you “hard reset” the machine.