

IR Communication and ActiveSync with a PC

Before communications with a PC can be established, the following conditions must be met:

Special Note for Microsoft Proxy Client Users

With Windows CE software it is currently not possible to have Active Sync between your desktop and I.T. without disabling the Microsoft Proxy Client. This is done by Clicking on **Start / Settings / Control Panel / WSP Client**.

If **Enable Winsock Proxy Client** is checked, click on the box to remove the check mark.

IMPORTANT! You must now shut down your computer and restart it.

This now means that you cannot have Internet access through your network.

IR must be properly installed on the PC.

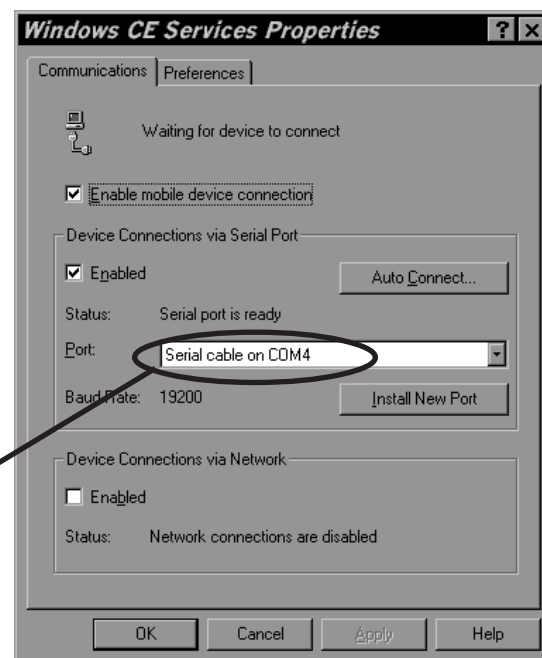
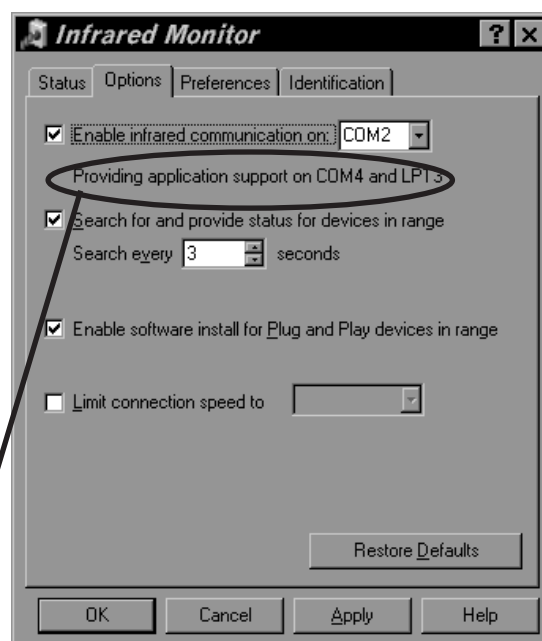
Windows CE Services must be properly installed on the PC. This allows a Windows 95/98/NT machine to communicate with a Windows CE machine. When you set up CE Services, use a 'typical' setup.

CE Services Setup on the PC

Double click on **Control Panel** then **Infrared**.

Note the settings for the IR opposite the "Providing application support on ..." (in this case com4, in your case, whatever com port is shown). Close this window

Double click on **Mobile Devices / File / Communications**. Change the port to match settings from the Infrared window.



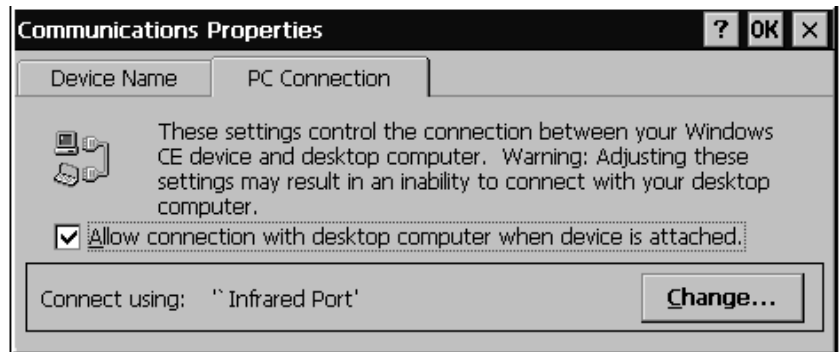
Communication Setup on the I.T.

Double click on *My Handheld PC / Control Panel* folder / *Communication* icon.

On the **PC Connection** tab, click the box by *Allow connection with desktop computer when device is attached*. A check mark should appear in the box when it is selected.

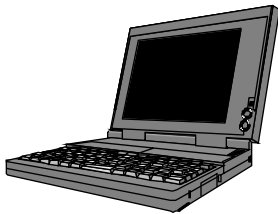
Click on the **Change...** button.

Set the connection to **Infrared Port**.



Ready to Connect

...On the PC



(Ensure Microsoft Proxy Client is disabled if you were using it)
Be sure to have IR running.
Double click on the Mobile Devices icon (installed with CE Services).
A mobile devices window opens up and waits for a connection.

...On the DreamWriter® I.T.



From the **Start** menu, click on **Programs**, click on **Communications** then **PC Link**.

...The Connection

The I.T. and the PC will now establish a connection. When it is established, the name of the I.T. appears in the Mobile Devices Window. If there is no name, it will be called 'guest'.

An additional window entitled "**New Mobile Device Detected**" will open automatically. Here you have the option to Synchronize, Browse or Restore the files on the I.T.

Once you have selected the option (generally you will use Browse), double click on the Guest icon (or on the name of your I.T.) in the Mobile Devices Window

The I.T. will act as a host for the PC. You can manipulate files from the PC but NOT from the I.T.